

Experience the new standard in angiography-based FFR

# Medis QFR<sup>®</sup>

## Clinical Evidence

 **SIMPLE**

 **FAST**

 **PROVEN**

# Medis QFR<sup>®</sup>

## Physiology made **simple.**

Powered by artificial intelligence and backed by scientific evidence, Medis QFR<sup>®</sup> is a novel noninvasive software solution, designed to assess angiography-derived physiology in patients with epicardial artery disease.

### Medis QFR<sup>®</sup> streamlines procedures, saving time, and minimizing risks for interventional cardiologists

- Pre-PCI**  
**Analyze efficiently**

Assess coronary lesion severity and morphology effectively<sup>1</sup>  
Identify functionally significant lesions & CAD patterns for treatment planning  
Predict post-PCI QFR<sup>1</sup>
- During PCI**  
**Optimize confidently**

Enhance confident decision-making using immediate objective lesion data<sup>2</sup>  
Determine the stent size & length for optimal stent positioning and placement  
Streamline workflow during procedures<sup>1</sup>
- Post-PCI**  
**Evaluate safely**

Evaluate physiological improvement and ensure long term safety & effectiveness  
Improve patient's clinical outcomes<sup>3</sup>  
Defer patients confidently sparing unnecessary Cath lab visits<sup>4</sup>

### Simple, fast & proven. One tool. Comprehensive insights.



**Patient Safety**

No wire manipulation



**Patient comfort**

No adenosine to inject



**Measurement accuracy**

No threat of signal drift (i.e., impaired accuracy)



**Adaptation**

No limitation with tortuous vessels



**Speed**

Automatic physiology & morphology insights

### Unmatched clinical **accuracy**

Medis QFR<sup>®</sup> stands out with its proven exceptional accuracy in **clinical settings.**

**QFR<sup>®</sup> vs. angiographic assessment**

**0.92**  
AuC

"Online computation of QFR in the Cath lab is clinically feasible and superior to angiographic assessment for evaluation of intermediary coronary artery stenosis using FFR as a reference standard.<sup>5"</sup>

**QFR<sup>®</sup> vs. FFR**

**0.94**  
AuC

"Excellent correlation and agreement between QFR and FFR was demonstrated. QFR value below the threshold of 0.80 optimally predicts functional significance of coronary stenosis.<sup>6"</sup>

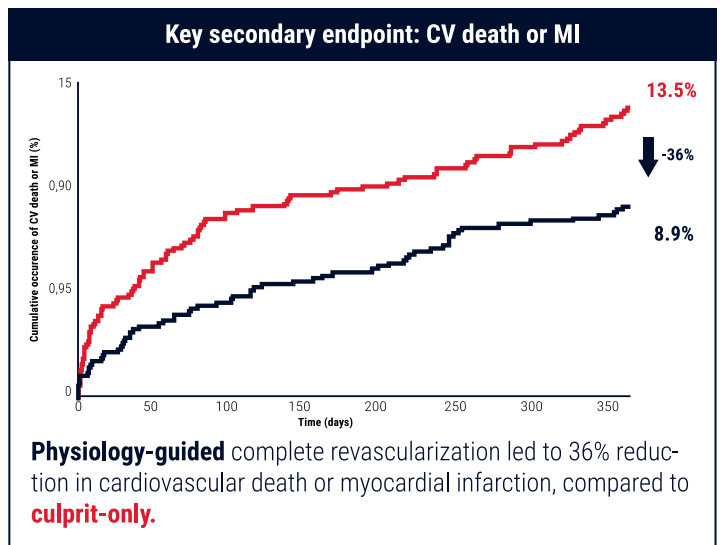
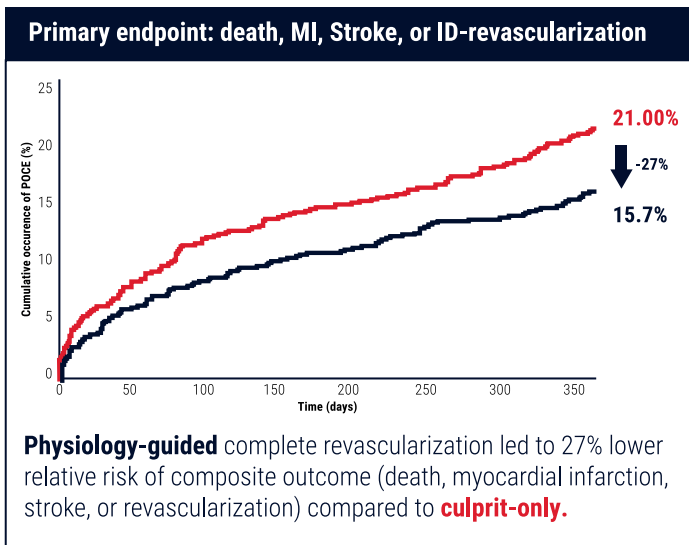
**QFR<sup>®</sup> vs. iFR**

**0.88**  
AuC

"QFR showed excellent correlation and diagnostic performance for both invasive pressure-derived physiologic indices (FFR and iFR), regardless of clinical presentation.<sup>7"</sup>

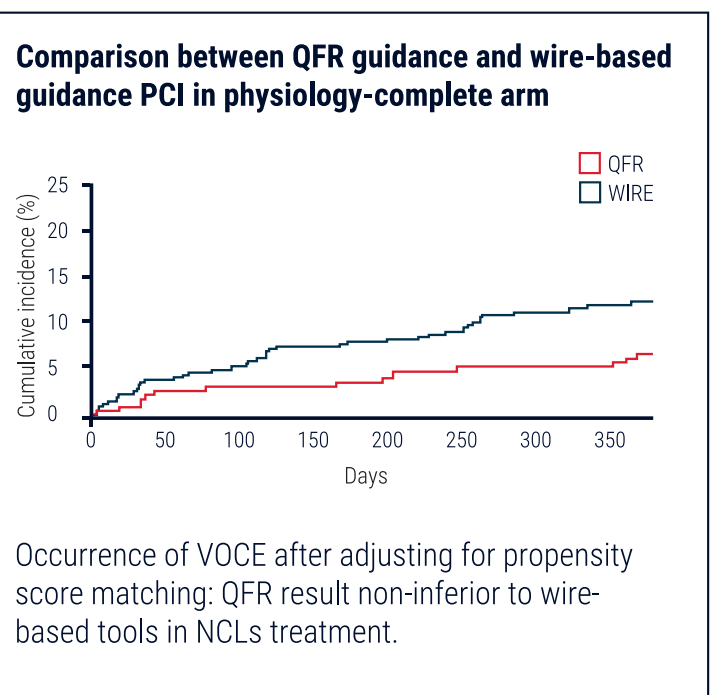
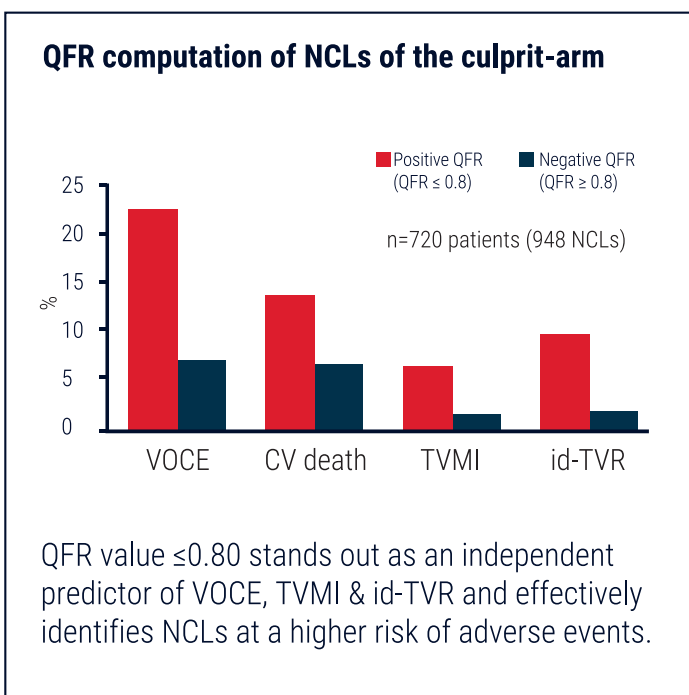
## FIRE multicenter trial demonstrates superiority of physiology-guided complete revascularization QFR and pressure wire guided complete revascularization superior to culprit-only revascularization<sup>8</sup>

Physiology-guided complete revascularization in older patients (n=720) with myocardial infarction and multivessel disease leads to lower risk of adverse cardiovascular events compared to culprit-lesion-only (n=725) PCI. Physiological assessment was conducted by means of wire-based methods (hyperemic or non-hyperemic) and angiography-based QFR measurements.



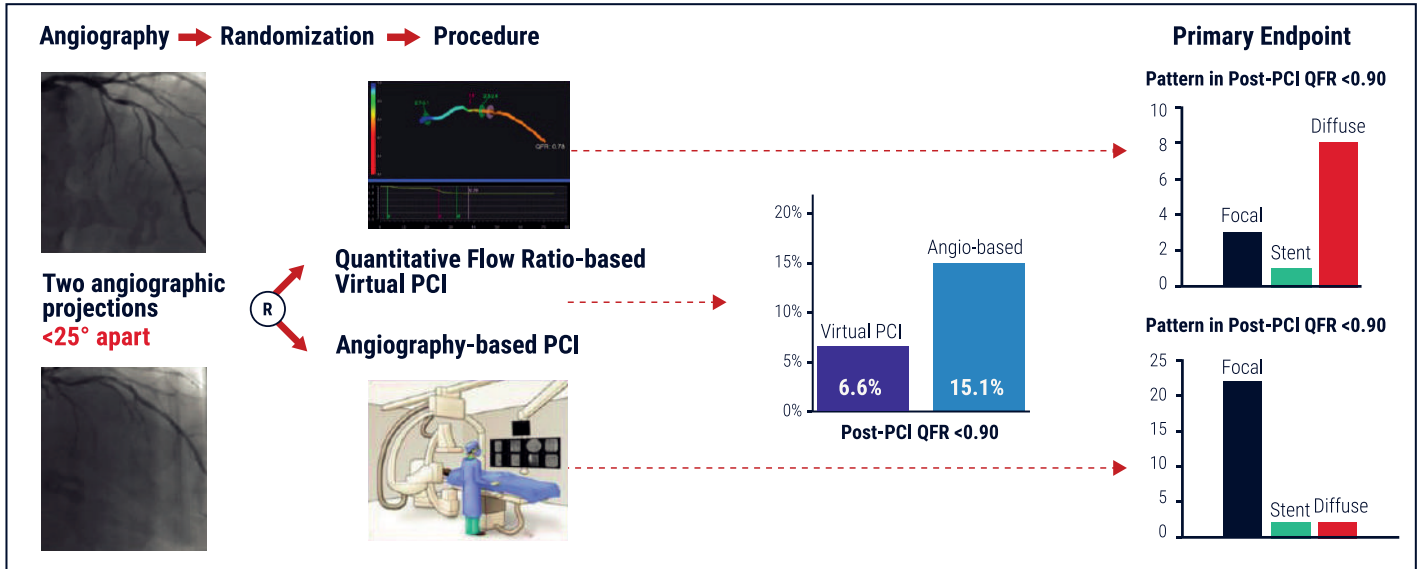
## QFiRe: QFR-guided PCI of NCLs is non-inferior to wire-based physiology<sup>9</sup>

FIRE's prespecified sub-study assessing QFR for the revascularization of non-culprit lesions (NCLs) in older AMI patients ( $\geq 75$  years) validates the safety and efficacy of QFR-guided interventions.



## Pre-PCI: QFR helps in PCI planning<sup>10</sup>

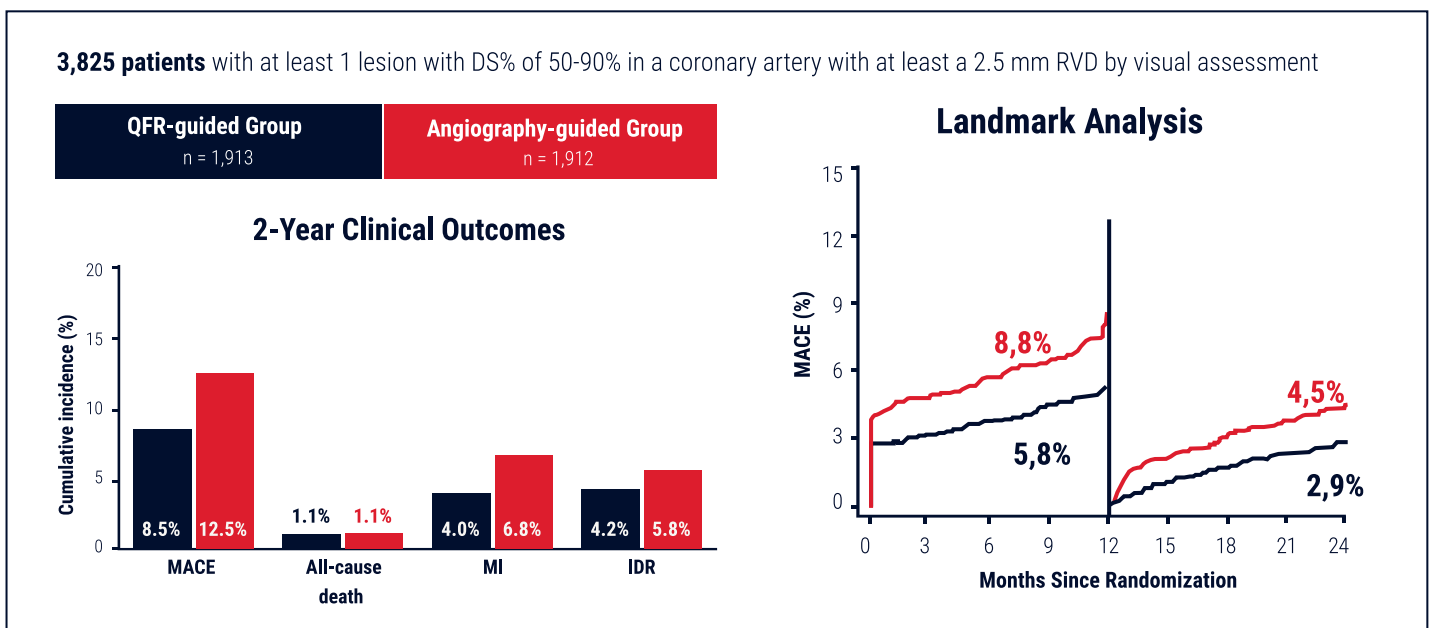
The AQVA trial demonstrated superiority of a QFR-based virtual PCI plan versus a conventional angio-based approach with regard to post-PCI optimal physiological results.



The **QFR-based virtual PCI** strategy changed the operators' procedural plan in one-quarter of the cases and was not associated with either longer procedures or a higher amount of contrast or radiation dose.

## During-PCI: QFR-guided PCI approach improves long term clinical outcomes<sup>11</sup>

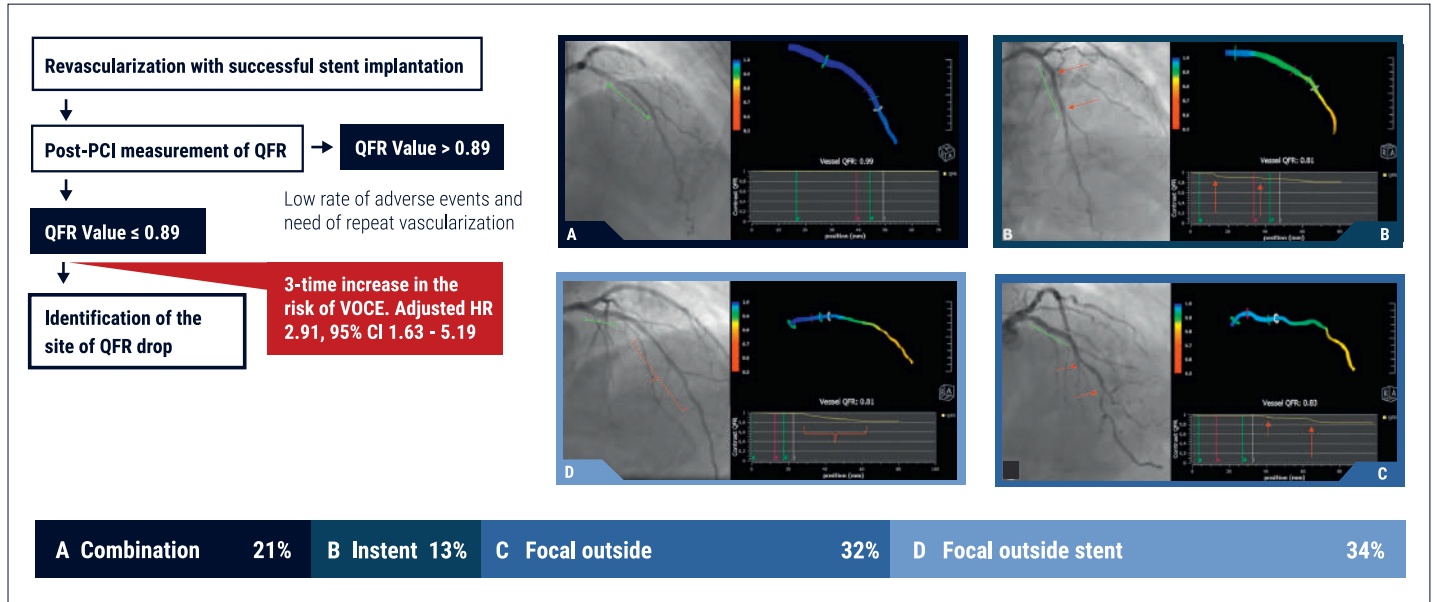
The FAVOR III Trial demonstrated a 32% reduction in MACE in a 2-year follow-up (FU) study.



QFR resulted in a strategy change in 23.3% of patients, with 19.6% undergoing deferral and 4.4% receiving treatment for a vessel initially not planned for intervention.

## Post-PCI: QFR independently predicts adverse events after stent implantation<sup>12</sup>

The HAWKEYE Trial shows that a Post-PCI cut off value <0.89 was associated with a 3-fold increase in the risk of adverse events.



QFR can be used with a sufficient degree of confidence to drive prognostic intervention decision-making, with lower post-PCI QFR values accurately predicting adverse clinical outcomes

### Exceptional performance

**3x**

3-fold decrease in the risk of adverse events associated with a Post-PCI cut off value > 0.89<sup>12</sup>

**32%**

Reduction in MACE compared to angiographic group after 2 years<sup>11</sup>

**30%**

Faster than wire-based FFR guided approach<sup>13</sup>

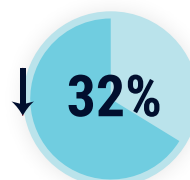
## Medis QFR<sup>®</sup> enhances safety for both patient & provider<sup>14</sup>

Time-saving and radiation-reducing benefits of QFR<sup>®</sup> implementation



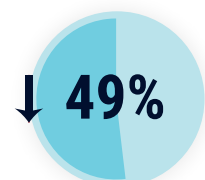
Medis QFR<sup>®</sup> measurements of coronary artery blood flow correlate with iFR or RFR measurements and are associated with shorter procedure times and reduced radiation dose

**Faster Diagnosis**



Less Fluoroscopy time vs iFR or RFR examination

**Lower Radiation**



Less dose vs iFR or RFR examination

## What **experts** say about Medis QFR®

“

QFR® streamlines the Cath Lab workflow, increasing the adoption of coronary physiology. The benefits are the cost effectiveness as well as the time efficiency.

**Dr. Yuhei Kobayashi**

New York Presbyterian Hospital, United States  
Interventional cardiologist / Cardiologist



“

This technique is simpler, safer and less expensive with equivalent outcomes and will conceivably be readily and widely adopted.

**Dr. Morton J. Kern**

University of California, United States  
Interventional cardiologist / Cardiologist



“

State-of-the-art approach in acute coronary syndrome targets on the “pancoronary risk”. This can be assessed easily, safely and reproducibly by QFR®.

**Dr. David M. Leistner**

Universitätsklinikum Frankfurt am Main, Germany  
Interventional cardiologist<sup>13</sup> / Cardiologist



“

QFR® is a robust technology and it provides good diagnostic data and guiding information.

**Dr. Niels Holm**

Aarhus University, Denmark  
Clinical Researcher



## About Medis

Medis was created in 1989 as a spin-off of the Leiden University Medical Centre (LUMC Netherlands). Our founder and current CSO, Hans Reiber, built the company focusing on X-ray and image analysis of the heart with the mission to make these tools available to all medical researchers and specialists.

For over 30 years, Medis has been providing high-quality quantitative analysis solutions for cardiovascular imaging to the medical community. Our heritage and core values are based on this strong purpose of contributing to a healthier society by providing the right tools to cardiologists, radiologists, researchers, and industry partners.

Medis' software is internationally appreciated due to its ease of use, and due to the clinical outcome for the patients. Our software creation and realization process is as simple, as it is unique: starting from a medical need that develops from concept to product. We continue to create, research, and innovate toward clinically relevant software solutions in cardiovascular imaging. In Medis, this continuous innovation leads to new software solutions based on new ideas for the ever-changing cardiovascular imaging environment.

At the same time, we remain relevant socially and sustainably. At Medis, quality is key. We test and validate in the most optimal way and deliver software solutions of the highest quality, without compromise.

That is what we have been doing for the last 30 years.



1. EuroIntervention 2023. Expert Consensus: <https://eurointervention.pronline.com/doi/10.4244/EIJ-D-23-00194>
2. Ullrich H. et al., Quantitative Flow Ratio or Angiography for the Assessment of Non-culprit Lesions in Acute Coronary Syndromes: Protocol of the Randomized Trial QUOMODO. *Front. Cardiovasc. Med.*, 04 April 2022. Sec. Coronary Artery Disease. Volume 9 - 2022 | <https://doi.org/10.3389/fcvm.2022.815434>
3. Dettori R. et al., Quantitative Flow Ratio Is Associated with Extent and Severity of Ischemia in Non-Culprit Lesions of Patients with Myocardial Infarction. *J Clin Med.* 2021 Oct; 10(19): 4535. Published online 2021 Sep 30. doi: 10.3390/jcm10194535
4. Song L. et al., Quantitative flow ratio-guided strategy versus angiography-guided strategy for percutaneous coronary intervention: Rationale and design of the FAVOR III China trial. *Am Heart J.* 2020 May;223:72-80. doi: 10.1016/j.ahj.2020.02.015. Epub 2020 Feb 24.
5. Westra, Jelmer, et al. "Diagnostic performance of in-procedure angiography-derived quantitative flow reserve compared to pressure-derived fractional flow reserve: the FAVOR II Europe-Japan study." *Journal of the American Heart Association* 7.14 (2018): e009603.
6. Cortes et al. "Quantitative Flow Ratio: Meta analysis & Systematic review". *Catheterization Cardiovascular Interventions Journal.* 2021 Apr 1;97(5):807-814. doi: 10.1002/ccd.28857
7. Hwang D. et al., Diagnostic Agreement of Quantitative Flow Ratio With Fractional Flow Reserve and Instantaneous Wave-Free Ratio. *Journal of the American Heart Association.* 2019;8:e011605. <https://doi.org/10.1161/JAHA.118.011605>
8. Biscaglia S. et al., Complete or Culprit-Only PCI in Older Patients with Myocardial Infarction. *NEJM* August 26, 2023. DOI: 10.1056/NEJMoa2300468
9. Erriquez A. et al., QFR for the revascularization of non-culprit lesions of older patients with myocardial infarction. *JACC Interventions* 2024.
10. Biscaglia S. et al., QFR-Based Virtual PCI or Conventional Angiography to Guide PCI: The AQUA Trial. *J Am Coll. Cardiol. Interv.* 2023; DOI: 10.1016/j.jcin.2022.10.054
11. Song L. et al. 2-Year Outcomes of Angiographic Quantitative Flow Ratio-Guided Coronary Interventions. *Journal of the American College of Cardiology*, Volume 80, Issue 22, 29 November 2022, Pages 2089-2101. <https://doi.org/10.1016/j.jacc.2022.09.007>
12. Biscaglia, S. et al. Prognostic Value of QFR Measured Immediately After Successful Stent Implantation: The International Multicenter Prospective HAWKEYE Study. *J Am Coll Cardiol Interv.* 2019;12(20):2079-88. <https://doi.org/10.1016/j.jcin.2019.06.003>
13. Westra J. et al., Diagnostic Performance of In-Procedure Angiography-Derived Quantitative Flow Reserve Compared to Pressure-Derived Fractional Flow Reserve: The FAVOR II Europe-Japan Study. *J Am Heart Assoc.* 2018. DOI: 10.1161/JAHA.118.009603
14. Stader J. Et al., Comparison of quantitative flow ratio with instantaneous wave-free ratio and resting full-cycle ratio during daily routine in the catheterization laboratory. *Catheter Cardiovasc Interv.* 2023. doi: 10.1002/ccd.30690. Epub 2023 May 17

#### Legal Statements

Medis and QAngio are registered trademarks of Medis Associated BV. QFR is a registered trademark of QFR Solutions BV. Medis Suite and QAngio XA have market clearance for USA, Canada, EU, Australia, South Korea, and Saudi Arabia. QFR 3.0 has market clearance for the EU.